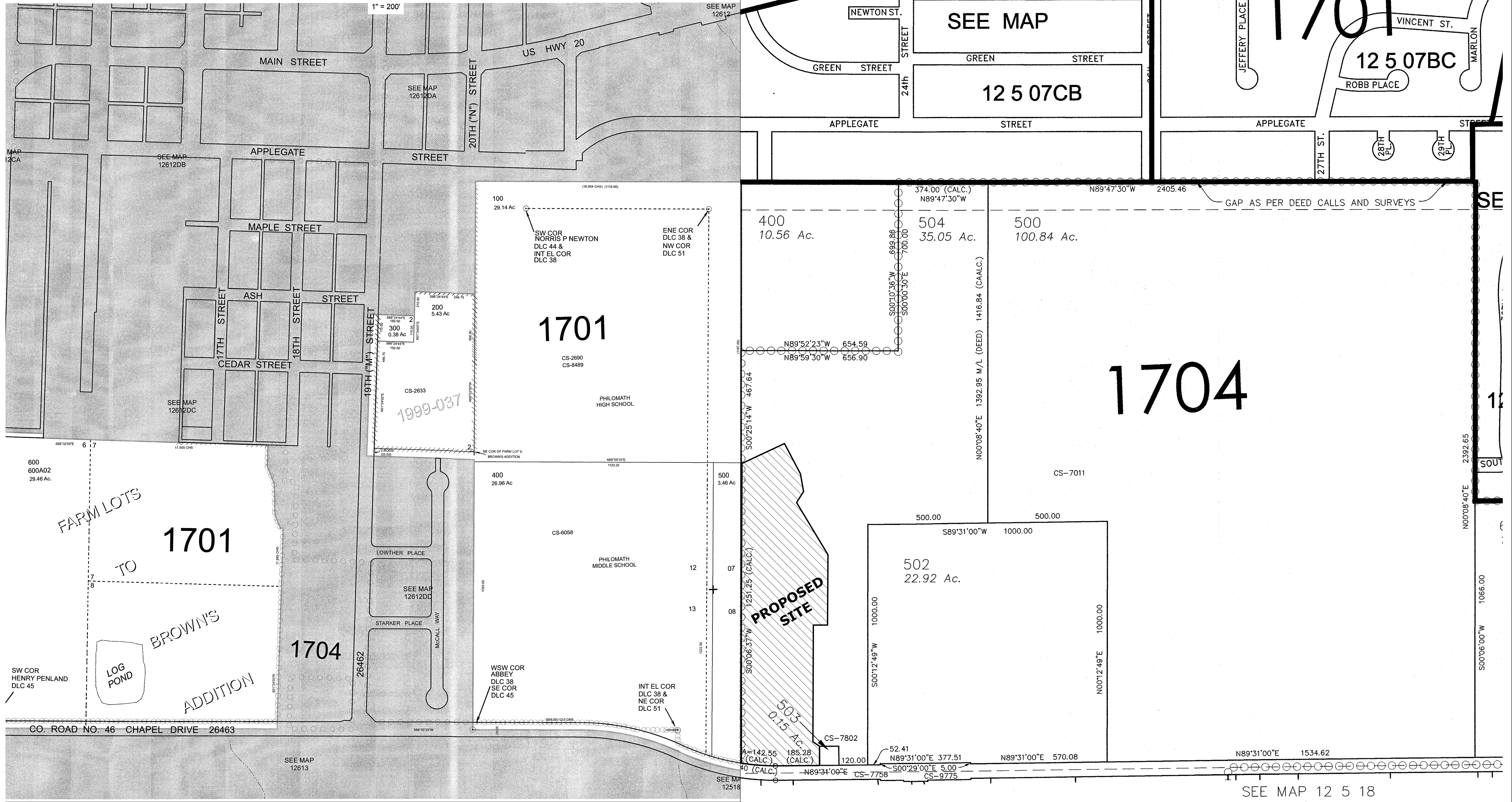
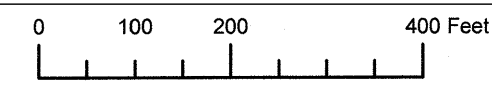


THIS MAP WAS PREPARED FOR ASSESSMENT PURPOSE ONLY

S.E. 1/4 SEC. 12 T. 12S. R. 6W. W.M.

BENTON COUNTY



MULTI/TECH
ENGINEERING SERVICES, INC.
1155 13th St. S.E. Salem, OR, 97302
PH: (503) 363-9227 FAX: (503) 364-1260
www.multitechinc.com office@multitechinc.com

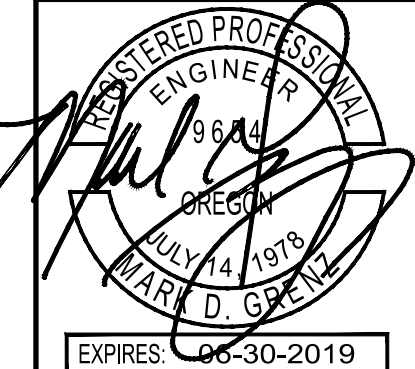
AREA MAP

CHAPEL DRIVE DEVELOPMENT

MULTITECH ENGINEERING EXEMPT FROM LIABILITY IF NOT STAMPED APPROVED
NOT FOR CONSTRUCTION UNLESS STAMPED APPROVED HERE

NO CHANGES, MODIFICATIONS OR REPRODUCTIONS TO BE MADE TO THESE DRAWINGS WITHOUT WRITTEN AUTHORIZATION FROM THE DESIGN ENGINEER.
DIMENSIONS & NOTES TAKE PRECEDENCE OVER GRAPHICAL REPRESENTATION.

DESIGN: M.D.G.
DRAWN: D.S.G.
CHECKED: B.M.G.
DATE: NOV. 2018
SCALE: AS SHOWN
AS-BUILT: _____



EXPIRES 06-30-2019

JOB # 6462

1 / 1

CHAPEL DRIVE DEVELOPMENT

SEC. 7 & 18, T. 12 S., R. 5 W., W.M.
CITY OF PHILOMATH
BENTON COUNTY, OREGON

J:\Map-6462\Map-6462-ChapelDriveDevelopment.dwg, 1/18/2018, 2:02:35 PM, 02/18/2018